

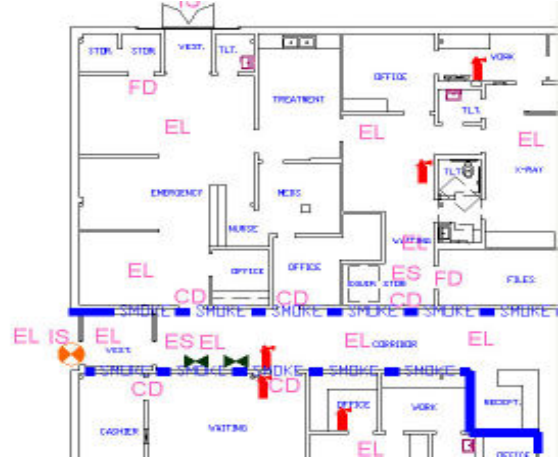
# SiteFM™

## Life Safety Drawing Manager<sup>PAK</sup>

### How can we help?

Accurate life safety drawings (which include the Statement of Conditions™) are vital to properly functioning life safety areas and error-free Joint Commission surveys. SiteFM™ Life Safety Drawing Manager<sup>PAK</sup> – the first step in complete space management – delivers web-based, accurate views of your facility's physical space to all users. More importantly, you can manage any changes to your drawings and improve maintenance program productivity with one application.

With Life Safety Drawing Manager<sup>PAK</sup>, your facility and your space are within budget and under your control.



*"FTG converted our existing facility drawings into web-based, viewable drawings with detailed layers and included our current SOC information. This has served us well during the survey process. We can now keep our drawings current and even share data with vendors and our hospitals within our network. Bottom line- we are in control of our facility space information."*

**-St. David's Healthcare Network, Austin, TX**

### The Solution

Life Safety Drawing Manager<sup>PAK</sup> includes [converting and updating your life safety drawings to 'as-is' status on our web-based application](#). Your updated drawings can contain over 40 layers of information, such as life safety details (fire/smoke barriers, fire alarm components) and Plans for Improvements (PFIs).

Also included is a [remote life safety review that includes identification of potential improvements and a review of existing Plans for Improvements \(PFIs\)](#). After completion and approval, final drawings are activated and full-color printed drawings are provided.

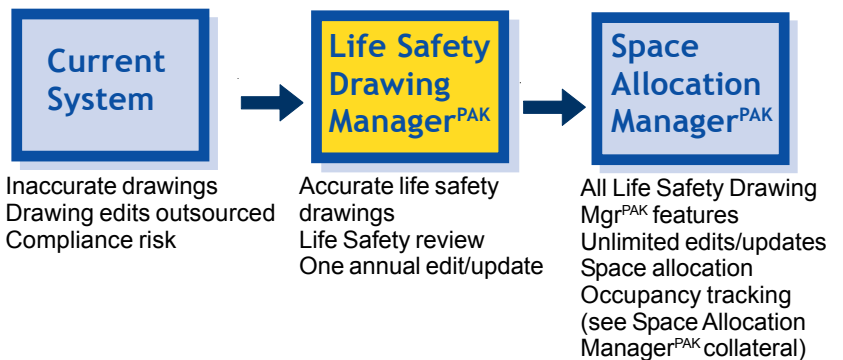
FTG and our partners are available to provide enhanced, on-site consulting services for an additional fee.

The Life Safety Drawing Manager<sup>PAK</sup> [includes an annual drawing update that enables you to edit your life safety drawings one time](#) without additional cost during your 12-month subscription period.

### Feature Highlights

- Management of life safety drawing layers
- LS 2.0, 3.0 and utility layers
- PFI documentation and tracking
- Web-based application allows for network visibility from any internet portal
- Electronic conversion of drawings included
- One annual update/edit to drawings included
- One step from Space Allocation Manager solution

### Space Management Options



Facilities Technology Group  
1110 East 32nd Street, Building 2  
Austin, Texas 78722



FacTech.com  
(800) 568-8003 Toll Free  
(512) 480-0883 Local